

PAIR

SERIES

CONNECTION: **FRONT**
TERMINAL TYPE: **SPRING CLAMP**
MOUNTING: **PANEL / DIN RAIL**

SUITABLE FOR

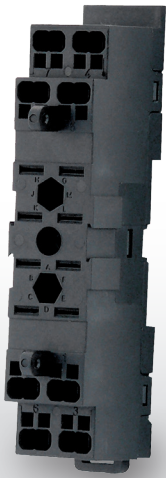


OVERVIEW

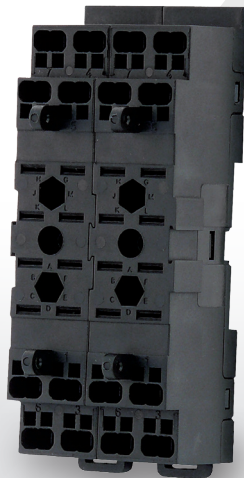
- Cable secured with spring clamp mechanism
- Insertion of lug with no need of tools
- Quick and easy wiring, saving more than 75% of time taken with conventional wiring
- Mounting to panel and 35 mm DIN rail
- Excellent contact pressure on relay terminals

- Sturdy construction, no internal soldering
- Compatible with cable up to 2.5 mm², bare (flexible or rigid) and with lug; 2 inputs per terminal
- Provision for fitment of keying pins
- Provision for fitment or retaining clip
- Protection IP20

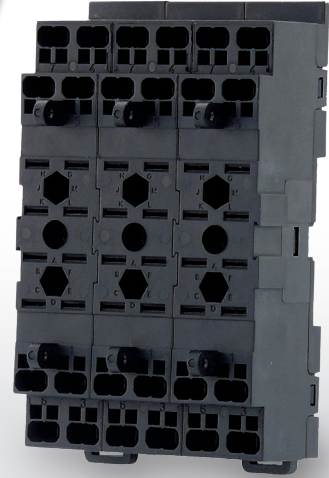
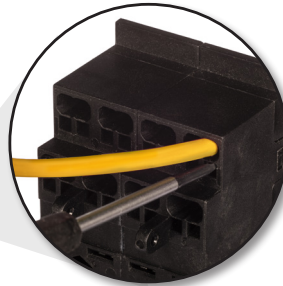
MODELS



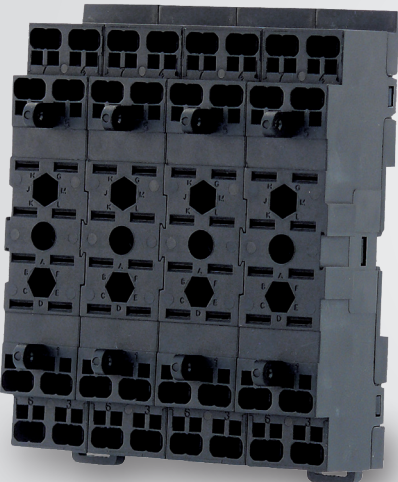
PAIR080



PAIR160



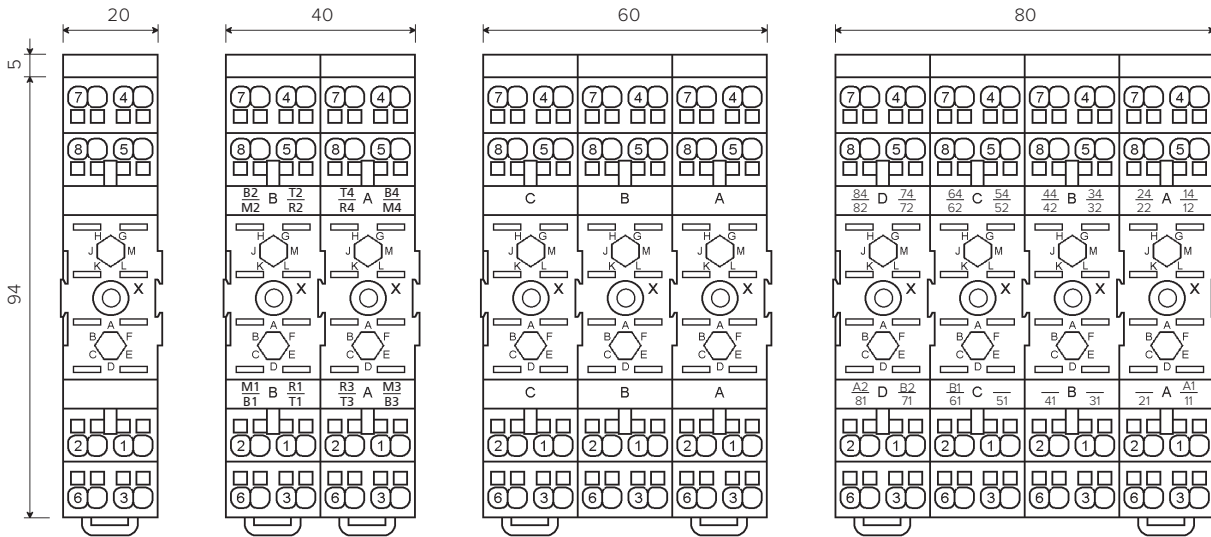
PAIR240



PAIR320



PAIR480

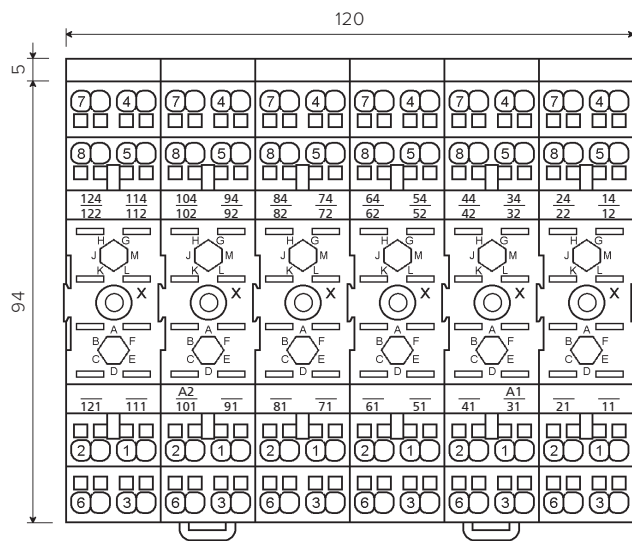


PAIR080

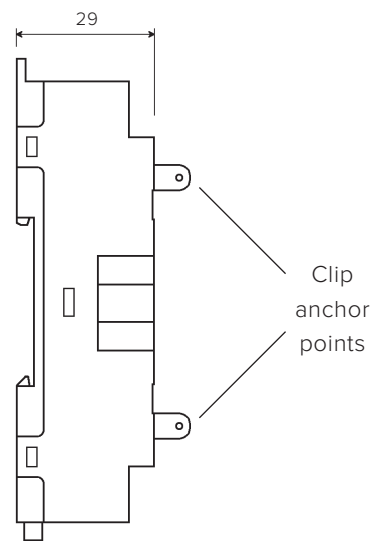
PAIR160

PAIR240

PAIR320



PAIR480



Side view

X = Fixing holes

SPECIFICATIONS

Weight: 62 / 124 / 186 / 248 / 370 g
Operating temperature: -50°C...+70°C
Storage temperature: -50°C...+85°C
Panel mounting:
 • ø holes: 3.2mm
 • centre distance between adjacent holes: 20mm
Mounting to Omega support: H35 to DIN 46277/3
 EN 60715 standards
Degree of protection: IP20
Insulation voltage:
 - between adjacent terminals: 2.5 kV 50 Hz for 1 min
 - between terminals and external ground:
 • DIN H35 rail mounting: 4 kV 50 Hz for 1 min
 • Wall mounting: 3 kV 50 Hz for 1 min
Fire resistance: EN60695-2-1, UL94 - V0, EN45545-2, NFPA130
Standards: EN60255, EN60947, EN 61810, EN61373

Angle of insertion tooling: 90° ± 5° from insertion surface
Terminal type: spring clamp
Inputs for each relay terminal: 2
Minimum section of cable:
 • cable without lug: 0.5 mm²
 • cable with lug: 0.5 mm²
Maximum section of cable: 2.5 mm²
 • bare cable: 2 x 2.5 mm²
 • cable with lug: 2 x 2.5 mm²
 • cable with **INSULATED lug:** 1 x 2.5 mm² or 2 x 1.5 mm²
Wire stripping length, mm: 10 mm ± 0.5 mm
Length of lug: 12 mm
Wiring with rigid cables or lug: pressure grip
Wiring with flexible cables, extraction of cables: using screwdriver type tool with slim shaft and slotted head measuring 2.5mm x 0.4mm, inserted perpendicularly to the socket.